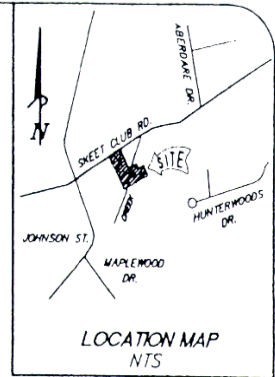


SKEET CLUB ROAD



JACK HOLMES CAMPBELL, JR
LOT A, PB 80, PG 89
DB 4093, PG 15
TAX MAP #401-1-5
ZONED: RS-12
(RES)
LUC 1

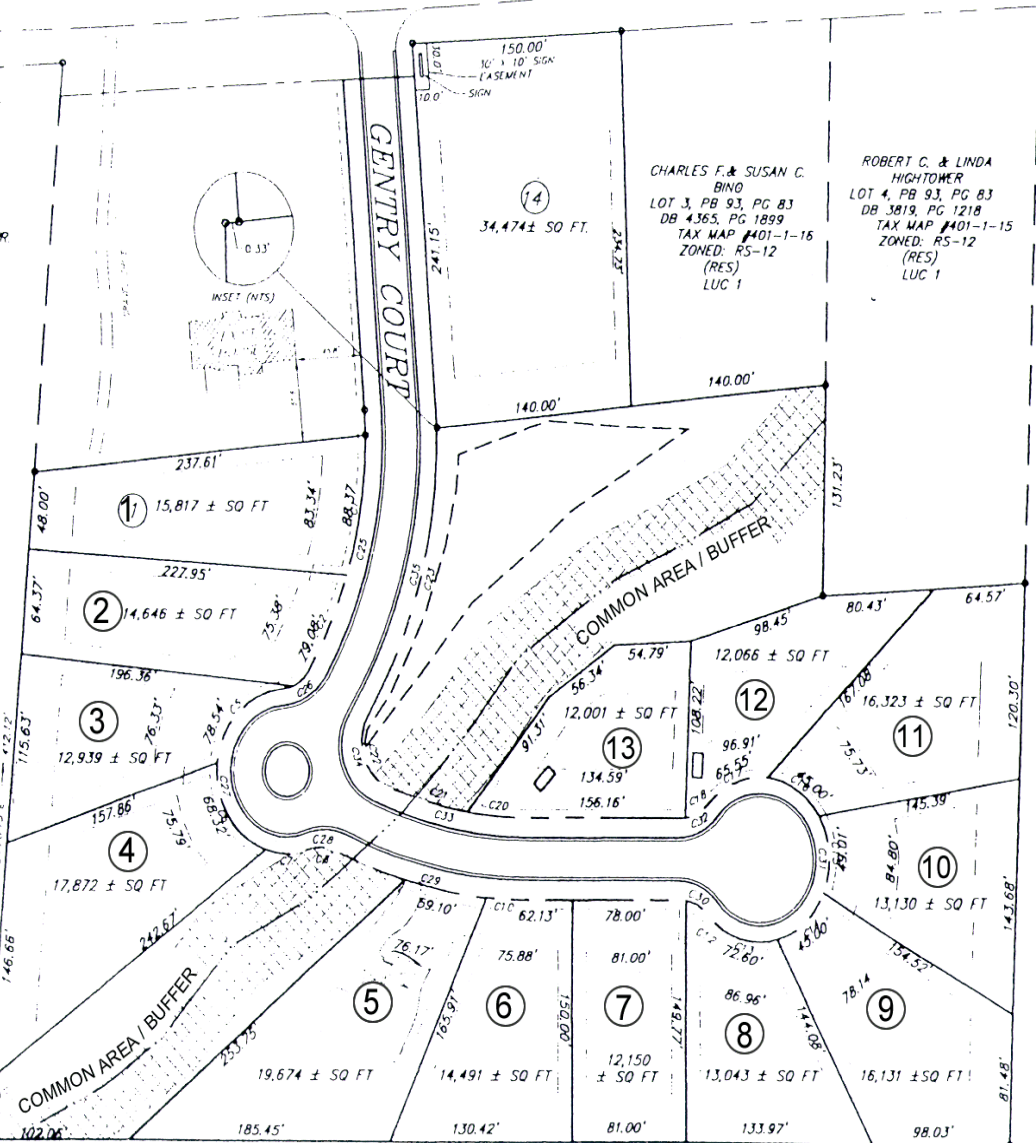
CHARLES F. & SUSAN C.
BINO
LOT 3, PB 93, PG 83
DB 4365, PG 1899
TAX MAP #401-1-16
ZONED: RS-12
(RES)
LUC 1

ROBERT C. & LINDA
HIGHTOWER
LOT 4, PB 93, PG 83
DB 3819, PG 1218
TAX MAP #401-1-15
ZONED: RS-12
(RES)
LUC 1

MAYNARD-WALSH, L.L.C.
TRACT B, PB 131, PG 9
DB 4776, PG 1480
TAX MAP #401-1-4
ZONED: RS-12
(RES)
LUC 1

GENTRY COURT

COMMON AREA / BUFFER



TUXEDO PARK
 A RESIDENTIAL SUBDIVISION
 HIGH POINT TOWNSHIP
 GUILFORD COUNTY
 HIGH POINT, N.C.

COMMON AREA WINDSOR SUBDIVISION PHASE-I

P.B. 114, PG. B
ZONED: RS-12
(RESIDENTIAL)
LUC 1

LOT 11 LOT 12 LOT 13 LOT 14

